

# Lake Macquarie

## *Lifestyle 2020* Integrated Land Use Strategy

### **Project Type**

City growth strategy

### **Date**

1999

### **ESD Role**

Lead consultant

### **Project Size**

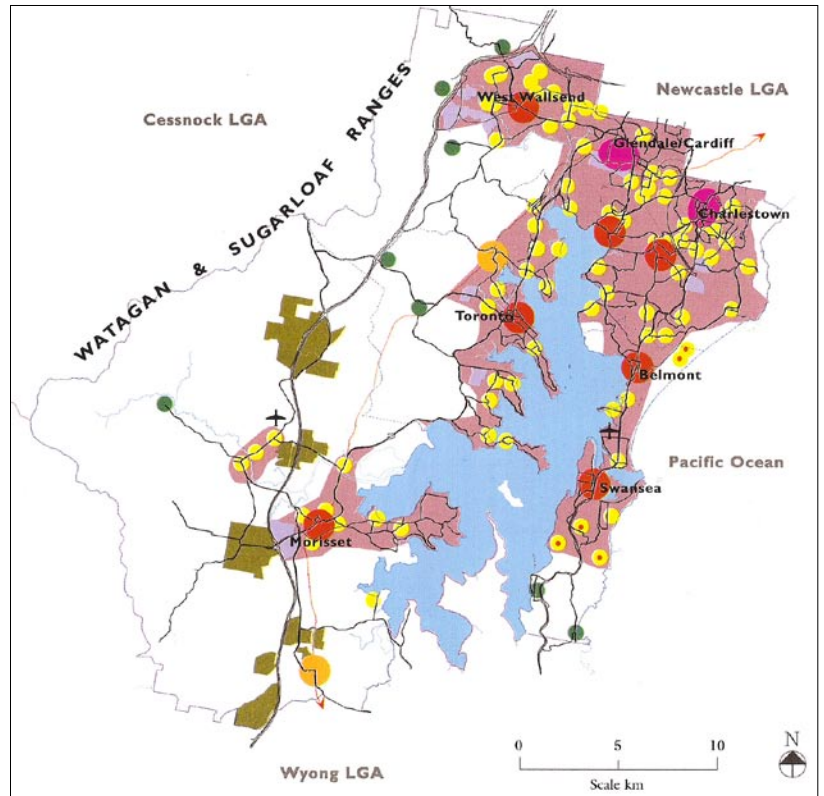
Citywide for a population of 230,000

### **Client**

Lake Macquarie City Council

### **Implementation Status**

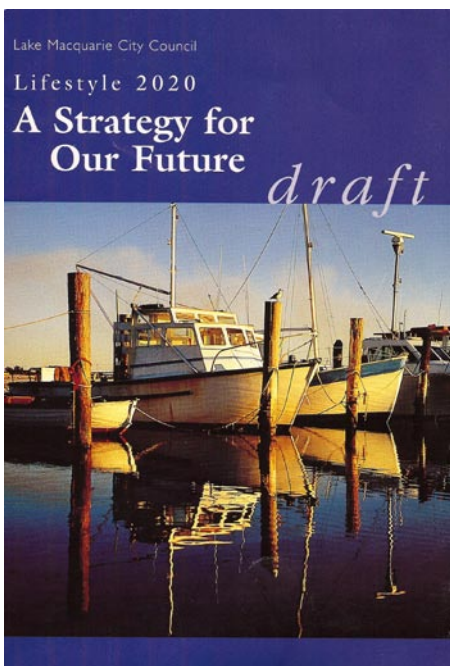
City strategy has been adopted, implementation under way



Urban structure map for the Lake Macquarie region.



Proposed design for Morriset township.



ESD was lead consultant for this citywide growth strategy for the City of Lake Macquarie, then population of 180,000. To engage the public and inform the Strategy, ESD led eight 3-day-long public Enquiries by Design for different areas, synthesising site-based designing with the conclusions of 30 diverse studies ranging from water quality to public transport viability. ESD and Lake Macquarie City Council then co-wrote the adopted Lifestyle 2020 Strategy.

The Strategy won the 1999 National RAPI Urban Design Award.

Part of ESD's brief was to 'skill up' key members of the Council staff in sustainable urban design so they could work with ESD on the project and more effectively implement its outcomes.

As a follow-up, LMCC had Chip Kaufman of ESD lead the Charlestown Forum in 2005 to recommend how best to advance the development of the existing regional centre of Charlestown.



Participants in the design workshop.